



DTA Mini Box



DTA Mini Box Important Safety Instructions





1. Read these instructions.
2. Keep these instructions.
3. Heed all warnings.
4. Follow all instructions.
5. Do not use this apparatus near water.
6. Clean only with a dry cloth.
7. Do not block any of the ventilation openings. Install in accordance with the manufacturer's instructions.
8. Do not install near any heat sources such as radiators, heat registers, stoves, or other apparatus (including amplifiers) that produce heat.
9. Do not defeat the safety purpose of the polarized or grounding type plug. A polarized plug has two blades with one wider than the other. A grounding type plug has two blades and a third grounding prong. The wide blade or the third prong is provided for your safety. When the provided plug does not fit into your outlet, consult an electrician for replacement of the obsolete outlet.
10. Protect the power cord from being walked on or pinched particularly at plugs, convenience receptacles, and the point where they exit from the apparatus. Ensure that the power cord receptacle is accessible such that power can be easily disconnected if required.
11. Only use the attachments/accessories specified by the manufacturer.
12. Use only with a cart, stand, tripod, bracket, or table specified by the manufacturer, or sold with the apparatus. When a cart is used, use caution when moving the cart/apparatus combination to avoid injury from tip-over.
13. Unplug this apparatus during lightning storms or when unused for long periods of time.
14. Refer all servicing to qualified service personnel. Servicing is required when the apparatus has been damaged in any way, such as power supply cord or plug is damaged, liquid has been spilled or objects have fallen into the apparatus, the apparatus has been exposed to rain or moisture, does not operate normally, or has been dropped.

WARNING

TO REDUCE THE RISK OF FIRE OR ELECTRIC SHOCK, DO NOT EXPOSE THIS PRODUCT TO RAIN OR MOISTURE. DO NOT INSERT ANY METALLIC OBJECT THROUGH THE VENTILATION GRILLS OR OTHER OPENINGS ON THE EQUIPMENT. APPARATUS SHALL NOT BE EXPOSED TO DRIPPING OR SPLASHING AND NO OBJECTS FILLED WITH LIQUIDS, SUCH AS VASES, SHALL BE PLACED ON THE APPARATUS.



EXPLANATION OF GRAPHICAL SYMBOLS

-  The lightning flash with arrowhead symbol, within an equilateral triangle, is intended to alert the user to the presence of "dangerous voltage" within the product's enclosure that may be of sufficient magnitude to constitute a risk of electric shock to persons.
-  The exclamation point within an equilateral triangle is intended to alert the user to the presence of important operating and maintenance (servicing) instructions in the literature accompanying the product.

FCC Information

This equipment has been tested and found to comply with the limits for a Class B digital device, pursuant to Part 15 of the FCC Rules. These limits are designed to provide reasonable protection against harmful interference in a residential installation.

This equipment generates, uses and can radiate radio frequency energy and, if not installed and used in accordance with the instructions, may cause harmful interference to radio communications. However, there is no guarantee that interference will not occur in a particular installation.

If this equipment does cause harmful interference to radio or television reception which can be determined by turning the equipment off and on, the user is encouraged to try to correct the interference by one or more of the following measures:

- Increase the separation between the equipment and receiver.
- Connect the equipment into an outlet on a circuit different from that to which the receiver is connected.
- Consult the dealer or an experienced radio/TV technician for help.
- Only shielded interface cable should be used.

Finally, any changes or modifications to the equipment by the user not expressly approved by the grantee or manufacturer could void the user's authority to operate such equipment.

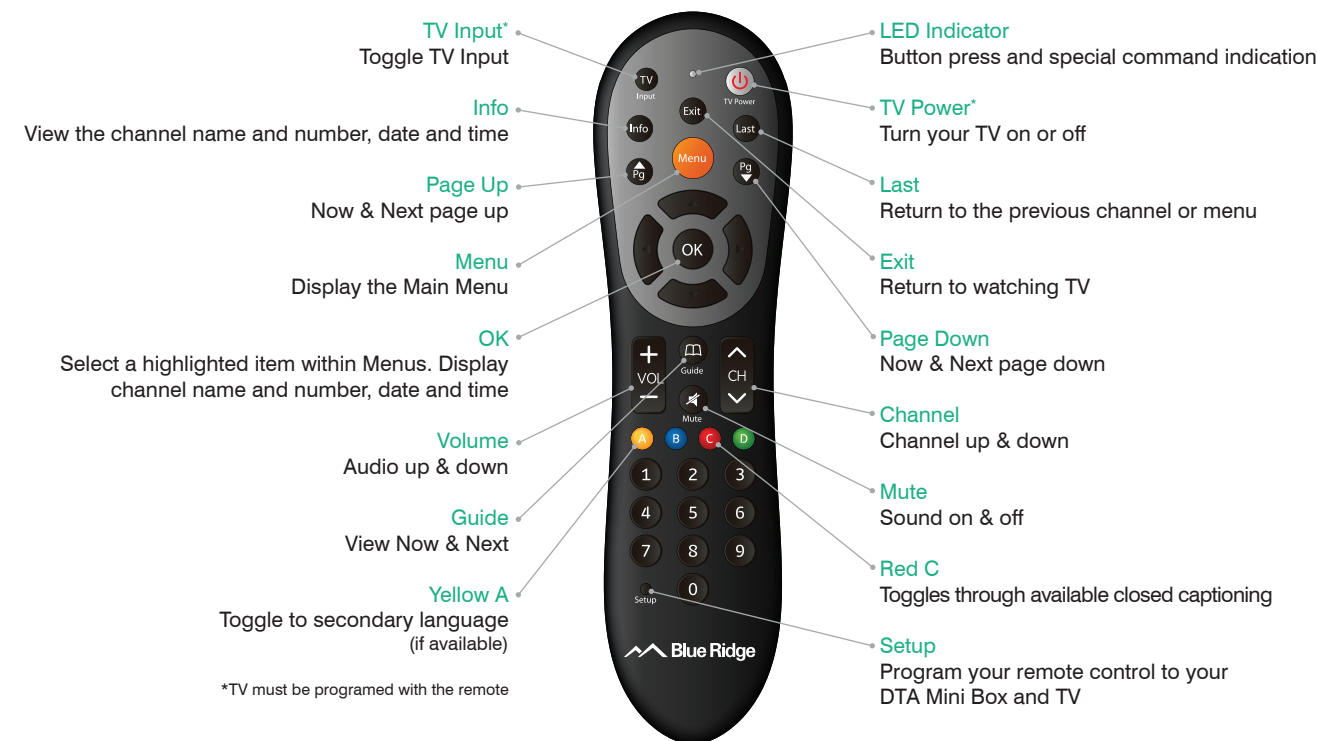
Disconnection Device

Disconnect the main plug from the apparatus, if it's defective. And please call a repair man in your location. When used outside of the U.S., it may be used HAR code with fittings of an approved agency is employed.

CAUTION

These servicing instructions are for use by qualified service personnel only. To reduce the risk of electric shock do not perform any servicing other than that contained in the operating instructions unless you are qualified to do so.

Manufactured under license from Dolby Laboratories. Dolby and the double-D symbol are trademarks of Dolby Laboratories.



Thank you for being a Blue Ridge Communications customer. With this DTA Mini Box, you can now enjoy viewing digital quality programming.



1 setup

Setup your DTA Mini Box by following the connection diagrams on page 3.

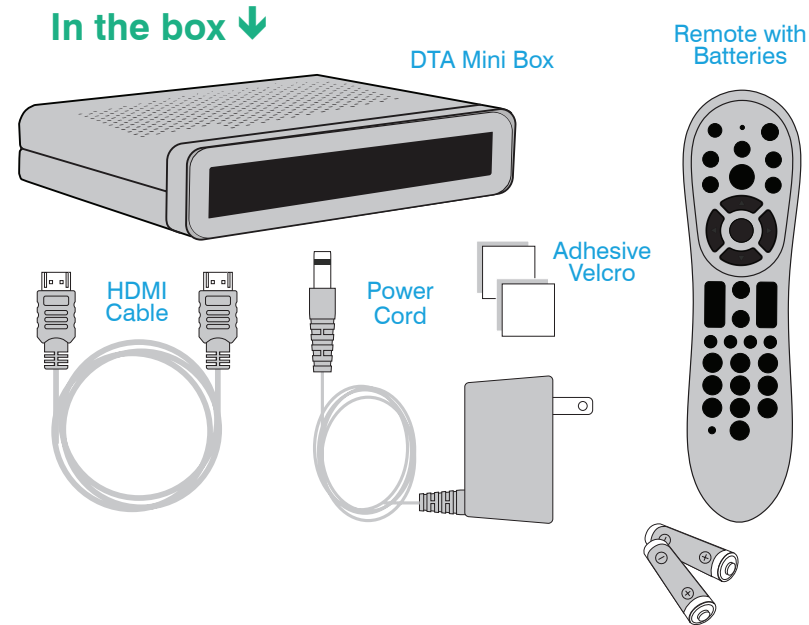
2 activate

Activate your DTA Mini Box by calling 800-CABLE 77 or going online www.brctv.com/alldigital.

3 pair remote

Pair your remote with your DTA Mini Box and TV by following the directions on page 5.

Let's get started! →



In the user guide ↓

Cable Connections	3
Activation	4
Remote Control	5
Program your remote control	5
Pair your remote control	6
Remove remote control pairing	6
Menu	7
Now & Next	9
FAQs	11

1 Coax Connection to your DTA Mini Box

A. Find the coax cable connected to the back of your TV.

B. Remove the coax from the TV and connect it to the Cable In on the back of your DTA Mini Box.



2 HDMI or Coax Connection to TV

A. If your TV has an HDMI input connection use the enclosed HDMI cable to connect the DTA Mini Box to the TV.



B. If you don't have an HDMI port on your TV, use the enclosed COAX cable to connect the DTA Mini Box to the TV.



3 Connect to power

A. Plug in the power cord to your DTA Mini Box, then set the input on your TV (HDMI if you used the HDMI cable, or Channel 3 if you used the Coax cable).



4 Activate your DTA Mini Box

Before you activate

A. Complete the Cable Connection steps prior to activating.

B. Have your Account Number Accessible. This is typically found on your Billing Statement.

Now you are ready to activate!

C. Call 1-800-CABLE 77 or
Log onto www.brctv.com/alldigital

Note: Installation and activation will not impact your current existing cable service.



NOTE

- When inserting batteries, make sure that the polarity (+/-) is correct.
- The LED on the top of the remote is a visual indicator that confirms the remote has power when a button is pressed.
- Your remote may vary slightly from the one pictured here. However, basic functions should remain the same.

Program your remote to control your TV functions.

Your remote control is already programmed to control your DTA Mini Box. To control your TV functions (**TV Input, TV Power, VOL+, VOL- and Mute**), follow the steps below:

1. Install the batteries (see left).
2. Find the manufacturer's code for your TV (see pamphlet packaged with the remote).
3. Turn on your TV and DTA Mini Box.
4. On your remote, press and hold the **Setup** button until the **Indicator LED** changes from red to green.
5. Enter the first manufacturer's code you found in Step 2. The **Indicator LED** will flash green twice.
6. Press the **TV Power** button on the remote control. If the TV turns off, you know the code has been accepted. Turn the TV back on and make sure that the **VOL+/-** and **Mute** buttons also work. If so, you're all set!
7. If not, repeat these steps using the next manufacturer's code found in Step 2. (You may need to try several codes to find the one that works for your TV). If you still can't find a code that works, see "Can't Find Your Code?" at right.

Can't Find Your Code?

If you can't program your remote using the codes in the pamphlet, follow the steps below to search for your code.

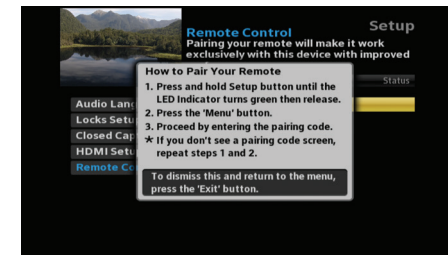
1. Turn on your TV.
2. On your remote, press and hold the **Setup** button until the **Indicator LED** changes from red to green.
3. Enter **A**.
4. Press the **CH ^** button multiple times until the TV turns off.
5. After the TV turns off, press **Setup**.
6. Successful TV IR code storage is indicated by 2 green blinks.

Installing your DTA Mini Box out of sight (pair remote) ↓

Your remote control can be paired directly with your DTA Mini Box, allowing you to place the device out of sight (in an entertainment center or behind your TV, for example). Once your remote is paired to a specific DTA Mini Box, it will not control any other set-top box in your home.

Pair your remote control with your DTA Mini Box

1. Press the **Menu** button.
2. Select Remote Control and then select Remote Control Pairing.
3. Press and hold **Setup** button until the LED Indicator turns green.
4. Press the **Menu** button.
Please allow a few seconds for the menu to display
5. Proceed by entering the pairing code displayed in blue on the pairing code pop-up screen.



Note: If you don't see a pairing code screen, repeat steps 1 and 2.

To force remote control to send volume control commands to the TV

1. Press and hold **Setup** button until the LED Indicator turns green.
2. Press the **volume up** button

To force remote control to send volume control commands to the DTA Mini Box

1. Press and hold **Setup** button until the LED Indicator turns green.
2. Press the **volume down** button

Note: Refer to the Remote Control Programming and Operating instructions, provided with your remote control, to program your remote to work on your TV and for more detailed information regarding pairing your remote.

Remove remote control pairing

If you would like to use your remote control for a different set-top box, you must first un-pair the remote control from the current device. Follow the steps below to remove the pairing.

- 1 Press and hold the **Setup** button until the LED Indicator turns green.
- 2 Enter 9-8-7 on the remote control.
- 3 The LED Indicator will blink green twice.

Menu

Press the **Menu** button on your remote control to access the main menu. The menu will allow you to update your DTA Mini Box settings.

Press the arrow buttons to navigate through the menu. Press **Exit** at anytime to return to watching live TV.

Audio Language →

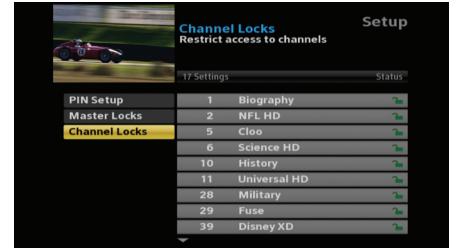
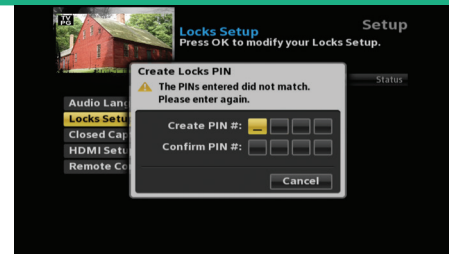
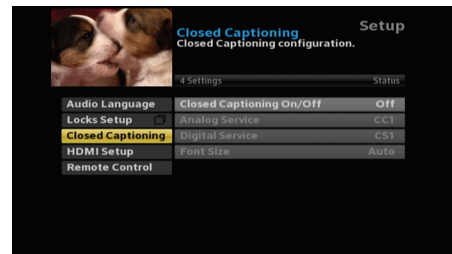
Select **Audio Language**, press the **OK** button on your remote. Scroll to select the desired Audio Language (if available).

Closed Captioning →

Select **Closed Captioning**, press **OK** to change status from **On/Off**. When Closed Captioning is turned On. The following options are available; Analog Service, Digital Service, Font Size. Scroll through the available settings using your arrow buttons. Ensure you select **Apply** to change the CC setting.

Remote Control

Refer to the remote control section of this user guide on pages 5-6.



Locks Setup ←

The first time you enter Locks Setup, it will prompt you to Create Locks PIN. Enter your desired PIN and keep that in a safe place to refer to later. This PIN will be needed to Change PIN, Clear PIN and set Channel Locks.

Set Channel Locks ↵

Select **Channel Locks**, a channel list will appear. Scroll up/down to highlight the channel you would like to lock. Press the **OK** button and you will see the unlock icon change to lock. This will indicate the channel has been locked and will require a PIN to be entered to view.

HDMI Setup ↵

- Select **TV Aspect Ratio** and press the **OK** button. Select Auto (recommended), 4:3, or 16:9 and press the **OK** button to select, scroll to **Apply** and select.
- Select **TV Output Resolution** and press the **OK** button. Scroll to highlight Auto (recommended), 1080i, 720p, or 480p and press the **OK** button to select, scroll to **Apply** and select.



Information Banner

Press the **Info** or **OK** button while watching live TV to view the channel name and number as well as the current date and time.

Now & Next Feature

Your DTA Mini Box will display a banner that shows what's on now and what's on next.

What's on Now
What's on Next

Lock/Unlock Icon
Locked Unlocked

Extended View

Now/Next Banner

TV Rating Icon
Pg Up/Pg Down Icon

Now & Next Banner and Extended View

Press the **Info** button on your remote to display the Now/Next banner. You can now use the **Arrow (▲/▼)** buttons to browse channel programs without changing the current channel. Press **OK** to select and change the channel.

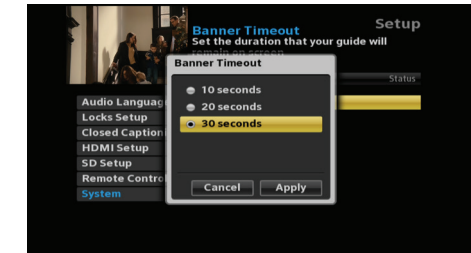
Press the **Info** button a second time and the extended view will show program information. Use the **Arrow (◀/▶)** buttons to toggle between what's on now and what's on next.

If the information doesn't fit on one screen you will see a Pg Down icon. Use the **Pg Up/Pg Down** buttons on your remote to view the additional information.

NOTE: Press the **Guide** button to immediately display the banner and extended view.

Set Banner Timeout

You can choose the duration the Now/Next banner will display. Press the **Menu** button and select System. Choose between 10, 20 and 30 seconds. Select Apply.



FAQs

Why won't my DTA Mini Box turn on?

- Double check that the power cord is connected to the DTA Mini Box and the AC wall outlet.
- If the DTA Mini Box is connected to another unit (such as a switched outlet or DVD player), verify that the unit is powered on.

Why do I have no sound when viewing cable channels?

- Verify that the MUTE button on remote control has not been pressed; try pressing the MUTE button to restore sound for both the DTA Mini Box and television.
- Verify that the volume on the DTA Mini Box is not turned down. Press the volume up on the DTA Mini Box remote. Volume level will be displayed on the bottom of the screen.
- Double check your audio connections. Refer to the CABLE CONNECTIONS section on page 3 to verify the correct cables are being used for the audio ports. If they match the diagrams, make sure they are firmly connected to the ports on both the TV and DTA Mini Box.

What should I do if there is no video or picture on the TV screen?

- Try another channel or enter your PIN code, this channel may be restricted from viewing.
- Verify that your TV is matching the setting on the DTA Mini Box. For instance, if you've connected using the coaxial jumper cable, make sure you have the same channel selected on the TV and 3/4 switch on the back of the DTA Mini Box. Refer to CABLE CONNECTIONS section on page 3 for more details.
- Double check all your cable connections, including verifying your coaxial cable is securely tightened on both the cable wall outlet and the INPUT port of your DTA Mini Box. Verify that all video cables between the DTA Mini Box and the TV are firmly connected. Refer to the CABLE CONNECTION section on page 3 for more detailed information regarding the correct connections and alternative video cable options.
- If the DTA Mini Box video output is connected to a home theater unit, verify that the home theater unit is

powered on and set to the appropriate input source. Refer to your home theater manual for more detailed instructions.

Why won't my DTA Mini Box respond when I press a button on the remote control?

- Check the batteries for possible replacement. Refer to pages 5-6 for more detailed instruction on the remote control and batteries.
- Refer to page 6 for instructions to pair your remote control.

What if I forgot my PIN Code?

- Contact your cable provider and they will be able to reset them back to the default. That will allow you to enter a new PIN code. Refer to page 8 to learn how to change your PIN code.

How do I control what my child watches?

- You can restrict viewing of certain material on your TV in the Locks Setup menu. Refer to page 8 for instructions.





Visit www.brctv.com/alldigital
or call **800-CABLE 77**
for additional information



www.brctv.com